

Influenza and Respiratory Illness in CAREC Member Countries Epidemiologic Weeks 1 - 38, 2010

Summary:

- During epidemiologic weeks 1 - 38, 2010:
 - 58 cases tested positive for pandemic (H1N1) influenza and 45 specimens were positive for influenza B. 14 cases tested positive for seasonal influenza A H3N2 and 17 cases were positive for influenza A (untyped).
 - There were 8 hospitalized pandemic (H1N1) influenza cases reported from 4 countries; and no reported deaths due to pandemic (H1N1) influenza.
 - There were no influenza outbreaks and no resistance to oseltamivir identified.

Table 1: Laboratory Confirmed Influenza Cases
CAREC Member Countries
Epidemiologic Weeks 1 - 38, 2010 and Epidemiologic Weeks 1 - 52, 2009

Country	Epidemiologic Weeks 1-38, 2010					Epidemiologic Weeks 1-52, 2009				
	Number of Cases with Specimens Tested	Cases (Percentage of total specimens tested)				Number of Cases with Specimens Tested	Cases (Percentage of total specimens tested)			
		Pandemic (H1N1) Influenza	Influenza B	Seasonal Influenza A H3N2	Influenza A (Untyped)		Pandemic (H1N1) influenza <small>(Weeks 15-52, 2009)</small>	Influenza B	Seasonal Influenza A H1N1 ^a	Seasonal Influenza A H3N2
Anguilla	1					48	14 (29.2%)			2 (4.2%)
Antigua & Barbuda	0					24	4 (16.7%)			1 (4.2%)
Aruba	0					406	57 (14.0%)			
Bahamas	0					49	24 (49.0%)			1 (2.0%)
Barbados	193	1 (0.5%)	1 (0.5%)		9 (4.7%)	443	155 (35.0%)	15 (3.4%)		3 (0.7%) 9 (4.7%)
Belize	44	14 (31.8%)				173	46 (26.6%)	2 (1.2%)		6 (3.5%)
Bermuda	7	4 (57.1%)				73	26 (35.6%)			1 (1.4%)
British Virgin Islands	3					58	25 (43.1%)			
Cayman Islands	8	1 (12.5%)				362	129 (35.6%)	4 (1.1%)	10 (2.8%)	10 (2.8%)
Dominica	123	2 (1.6%)	1 (0.8%)	2 (1.6%)	3 (2.4%)	173	49 (28.3%)			3 (2.4%)
Grenada	0					67	28 (41.8%)			1 (1.5%)
Guyana	3	1 (33.3%)				124	29 (23.4%)			
Jamaica ^b	730	7 (1.0%)	3 (0.4%)	12 (1.6%)	5 (0.7%)	4,712	195 (4.1%)	12 (0.3%)	9 (0.2%)	7 (0.1%) 15 (0.7%)
Montserrat	3					44	21 (47.7%)			
Netherlands Antilles ^b	0					263	128 (48.7%)			
St. Kitts & Nevis	3					45	10 (22.2%)			
St. Lucia	14		1 (7.1%)			199	75 (37.7%)			
St. Vincent & Grenadines	17		1 (5.9%)			51	19 (37.3%)			
Suriname	208	28 (13.5%)	38 (18.3%)			576	110 (19.1%)	4 (0.7%)	9 (1.6%)	3 (0.5%)
Trinidad & Tobago	3					815	270 (33.1%)	10 (1.2%)		4 (0.5%)
Turks & Caicos Islands	0					140	45 (32.1%)	2 (1.4%)		
Total	1360	58 (4.3%)	45 (3.3%)	14 (1.0%)	17 (1.3%)	8,845	1,459 (16.5%)	49 (0.6%)	28 (0.3%)	39 (0.4%) 27 (1.3%)

Data Source: The CAREC Laboratory and country-submitted reports as at October 4, 2010

Notes:

a In 2009, 5 specimens from Jamaica were mixed influenza specimens

b Of the 128 Pandemic (H1N1) lab confirmed cases reported, 59 were from Curacao, 38 were from Bonaire, 29 were from St. Maarten, 1 was from St. Eustatius and 1 was from Saba. Three of the cases from Curacao were from a cruise ship

CASES OF LABORATORY CONFIRMED PANDEMIC (H1N1) 2009 APRIL 16, 2009 - SEPTEMBER 25, 2010

As of October 4, 2010, during epidemiologic weeks 1-38, 2010, 58 cases were laboratory confirmed for pandemic (H1N1) influenza from 8 countries. Fourteen cases tested positive for seasonal influenza A H3N2, 17 cases were positive for influenza A (untyped) and 45 specimens were positive for influenza B [Table 1]. There were also 12 laboratory confirmed cases of RSV reported from Suriname, 20 RSV laboratory confirmed cases reported from Barbados, 8 laboratory confirmed cases of RSV reported from Dominica, 1 laboratory confirmed case of parainfluenza from Barbados, 1 laboratory confirmed adenovirus case reported from Barbados and 1 laboratory confirmed adenovirus case reported from St. Lucia.

Of the 58 laboratory confirmed pandemic (H1N1) influenza cases for which information is available, 50 presented with symptoms of upper respiratory tract infections and 11 had gastrointestinal symptoms. The age range of the cases was 0-57 years.

During epidemiologic weeks 1-38, 2010, there were 8 hospitalized pandemic (H1N1) influenza cases reported from 4 countries. Of the hospitalized pandemic (H1N1) influenza cases for which information is available, 1 case was pregnant, 1 case was obese with underlying respiratory conditions and 1 case had underlying medical conditions. There were no reported deaths due to pandemic (H1N1) influenza [Table 2].

There was also one hospitalized case of adenovirus confirmed from St. Lucia, one hospitalized case of influenza B confirmed from St. Vincent and the Grenadines, four hospitalized cases of influenza B confirmed from Suriname and one hospitalized case of RSV confirmed from Suriname.

CASE REPORTS OF INTERNATIONAL PANDEMIC (H1N1) 2009

An official count of cases reported in the Americas is available at <http://www.paho.org> and an official count of cases reported globally is available at <http://www.who.int>. However, please note that in accordance with the World Health Organization (WHO), countries are not required to test and report all cases, so the number of cases reported understates the true number of cases and is not a complete description of burden of disease.

REQUIRED ACTION FOR POSSIBLE DENGUE AND INFLUENZA CO-INFECTION

Dengue circulates in many countries in the Caribbean and the possibility of influenza and dengue co-infection exists. Patients with symptoms suggestive of dengue infection or meeting the case definition for undifferentiated fever should have a serum specimen taken and tested. If symptoms suggest the possibility of co-infection with dengue and influenza, then both a serum specimen and nasopharyngeal swab should be taken and submitted for testing.

**Table 2: Hospitalizations and Deaths for Laboratory Confirmed Cases of Pandemic (H1N1) CAREC Member Countries
Epidemiologic Weeks 1 - 38, 2010 and Epidemiologic Weeks 15 - 52, 2009**

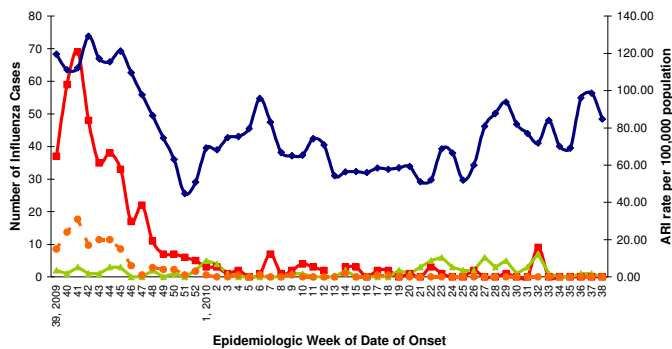
Country	Weeks 1-38, 2010		Weeks 15-52, 2009	
	Total Reported Hospitalizations	Total Reported Deaths	Total Reported Hospitalizations	Total Reported Deaths
Anguilla	0	0	0	0
Antigua & Barbuda	0	0	0	0
Aruba	0	0	0	0
Bahamas	0	0	1	1
Barbados	1	0	61	3
Belize	1	0	0	0
Bermuda ^a	2	0	5	0
British Virgin Islands	0	0	2	0
Cayman Islands	0	0	29	1
Dominica	0	0	13	0
Grenada	0	0	2	0
Guyana	0	0	7	0
Jamaica	0	0	49	7
Montserrat	0	0	1	0
Netherlands Antilles	0	0	11	0
St. Kitts & Nevis	0	0	4	2
St. Lucia	0	0	15	1
St. Vincent & the Grenadines	0	0	4	0
Suriname	4	0	58	2
Trinidad & Tobago ^b	0	0	88	5
Turks & Caicos Islands	0	0	0	0
Total	8	0	350	22

Note:

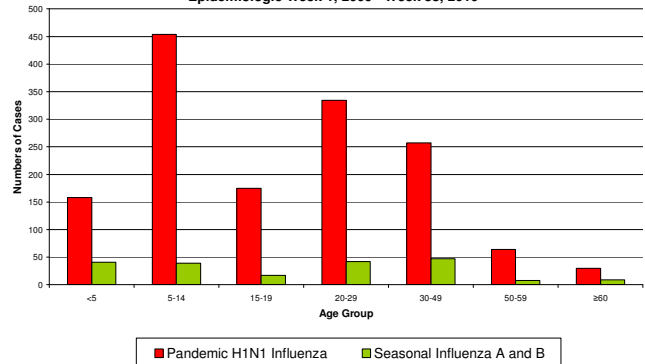
^a In Bermuda, there have been no confirmed deaths due to Pandemic (H1N1) 2009. However, there has been reported a death in a person with confirmed Pandemic (H1N1) 2009

^b In Trinidad and Tobago, there have been 5 confirmed deaths due to Pandemic (H1N1) 2009. There have also been 6 deaths reported among persons with confirmed Pandemic (H1N1) 2009

**Figure 1: Laboratory Confirmed Pandemic (H1N1) Cases and Seasonal Influenza A and B and Acute Respiratory Infections Incidence rate per 100,000 Population
Epidemiologic Week 39, 2009 - Week 38, 2010; CAREC Member Countries**



**Figure 2: Laboratory Confirmed Cases of Pandemic (H1N1) and Seasonal Influenza A and B by Age Group, in CAREC Member Countries
Epidemiologic Week 1, 2009 - Week 38, 2010**



FEVER AND RESPIRATORY ILLNESSES (ACUTE RESPIRATORY INFECTIONS AND SEVERE ACUTE RESPIRATORY INFECTIONS) EPIDEMIOLOGIC WEEK 39, 2009 - WEEK 38, 2010

Figure 3: Total Acute Respiratory Infections
2009/2010 Incidence rates per 100,000 Population*
Epidemiologic Week 39, 2009 to Week 38, 2010

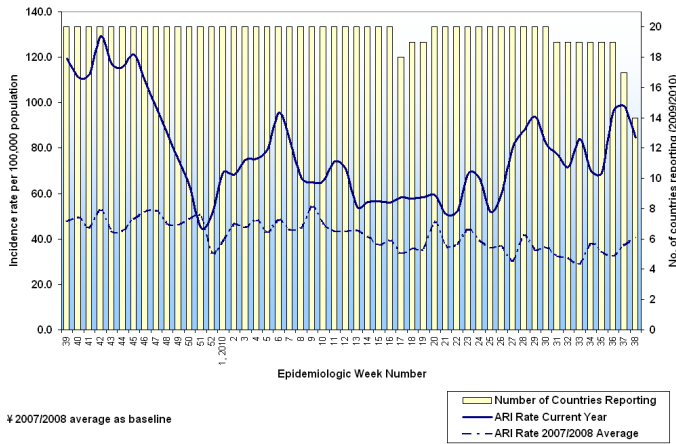


Figure 4: Acute Respiratory Infections <5 and ≥5 years old
2009/2010 Incidence rates per 100,000 Population*
Epidemiologic Week 39, 2009 to Week 38, 2010

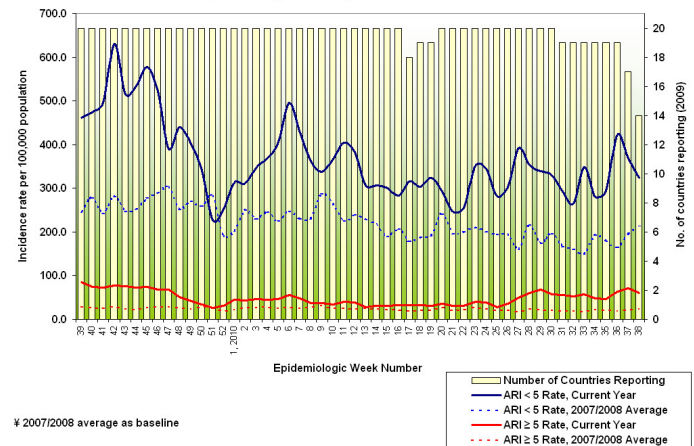


Figure 5: SARI Admissions Rate per 1000 Medical Hospital Admissions
reported from selected sentinel sites in Barbados, Bahamas, Dominica,
Jamaica, St. Lucia, St. Vincent & the Grenadines and Trinidad & Tobago*
Epidemiologic Week 39, 2009 - Week 38, 2010

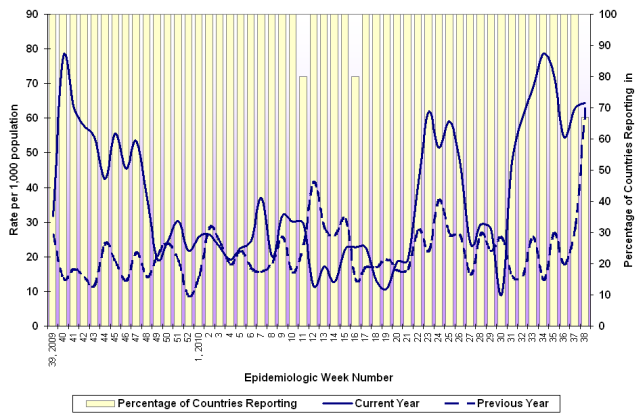
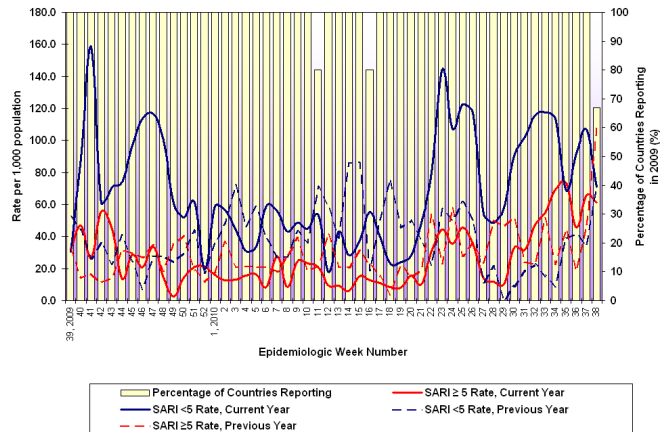


Figure 6: SARI Admissions Rate per 1000 Medical Hospital Admissions
reported from selected sentinel sites in Barbados, Bahamas, Dominica,
Jamaica, St. Lucia, St. Vincent & the Grenadines and Trinidad & Tobago*
Epidemiologic Week 39, 2009 - Week 38, 2010



* St. Lucia began reporting from EW 26, 2010; Trinidad and Tobago began reporting from 3 additional sentinel sites in EW 18, 2010

**Table 3: Reported Cases of Acute Respiratory Infections
CAREC Member Countries
January 3, 2010 - September 25, 2010 (Epidemiologic Weeks 1 - 38, 2010)**

Country	Last week reported	Week 38		Weeks 1 - 37	
		Fever and Respiratory		Fever and Respiratory	
		< 5 years	≥ 5 years	< 5 years	≥ 5 Years
Anguilla	37	-	-	205	377
Antigua & Barbuda	30	-	-	1214	1067
Aruba	-	-	-	-	-
Bahamas	38	120	141	1,167	1,404
Barbados	38	16	50	400	434
Belize	38	535	1,162	12,385	18,822
Bermuda	37	-	-	97	1,731
British Virgin Islands	36	-	-	204	321
Cayman Islands	38	34	55	853	2,122
Dominica	38	8	28	427	362
Grenada	38	130	201	3,020	3,225
Guyana	37	-	-	18,362	36,866
Jamaica	38	1,115	1,955	22,102	29,385
Montserrat	38	0	1	73	65
Netherlands Antilles [¥]	38		106		3,718
St. Kitts & Nevis	38	0	1	78	92
St. Lucia	38	32	76	700	687
St. Vincent & the Grenadines	38	11	10	398	316
Suriname	38	2	1	364	246
Trinidad & Tobago	36	-	-	15,381	785
Turks & Caicos Islands	38	21	24	351	281
Total		2,024	3,705	77,781	98,588

Data Source: Weekly Syndromic Surveillance Reports submitted to CAREC as at October 4, 2010

Notes:

¥ Data on Fever and Respiratory Symptoms from the Netherlands Antilles are not provided in an age-categorized format.

- Data not reported

**Table 4: SARI Hospitalizations and SARI Deaths reported from selected sentinel sites in
Barbados, Dominica, Jamaica, St. Lucia, St. Vincent & the Grenadines and Trinidad & Tobago
January 3, 2010 - September 25, 2010 (Epidemiologic Weeks 1 - 38, 2010)**

Country	Last week reported	Week 38, 2010		Weeks 1 - 37, 2010	
		SARI cases (rate) [‡]	SARI deaths (rate) [‡]	SARI cases (rate) [‡]	SARI deaths (rate) [‡]
Barbados	37	-	-	134 (35)	10 (20.7)
Dominica	38	1 (19.2)	0 (0)	42 (30.2)	0 (0)
Jamaica	38	33 (60.8)	5 (102)	431 (22.2)	2 (1.4)
St. Lucia [¥]	38	9 (200)	0 (0)	118 (187)	0 (0)
St. Vincent & the Grenadines	37	-	-	96 (40.2)	0 (0)
Trinidad & Tobago	38	0 (0)	0 (0)	630 (54.4)	0 (0)
Total		43 (64.3)	5 (87.7)	1451 (37)	12 (4.3)

Data Source: Weekly SARI/ARI Data Collection Forms submitted to CAREC as at October 4, 2010

Notes:

‡ Rate per 1,000 Hospital Medical Admissions

‡ Rate per 1,000 Deaths in Medical Admissions

- Data not reported

¥ St. Lucia began reporting from epidemiologic week 26, 2010

*Correspondence should be sent to the CSR-FLU Editor at:
carec-epidemiology@carec.paho.org*

Caribbean Epidemiology Centre (CAREC)

16-18 Jamaica Boulevard

Federation Park, St. Clair

Port of Spain

Trinidad & Tobago

Tel: 1-868-622-4261; Fax: 1-868-622-2792



**Pan American
Health
Organization**
Regional Office of the
World Health Organization